

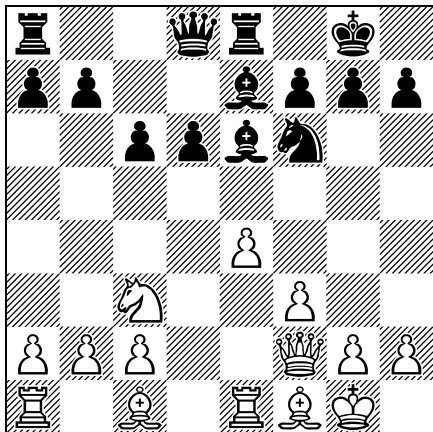


“EUWE’S GOEDE TIJD”

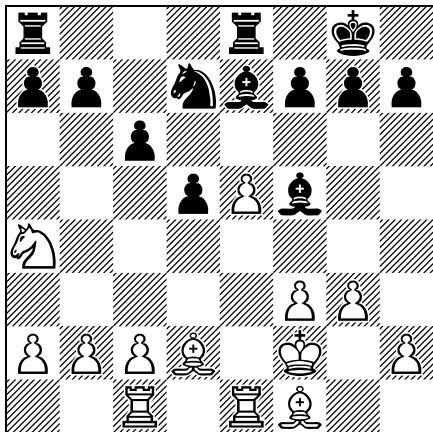
Hieronder de besproken partijen op de lezing in het Max Euwe-Centrum van Hans Bouwmeester op zondag 13 april 2008.

Euwe-Capablanca, Londen 1922

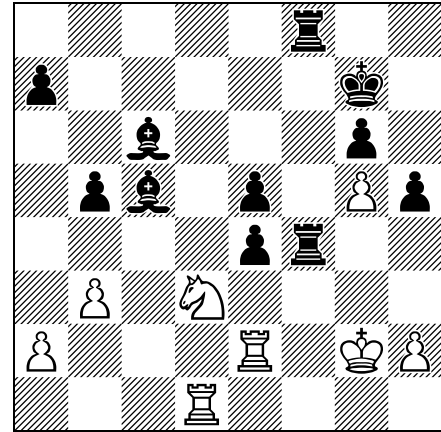
1.e4 e5 2.Pf3 Pc6 3.Lb5 Pf6 4.0-0 d6 5.d4
Ld7 6.Pc3 exd4 7.Pxd4 Le7 8.Te1 0-0 9.Lf1
Te8 10.f3 Pxd4 11.Dxd4 Le6 12.Df2 c6



13.Ld2?! (13.Le3!) 13...Db6 14.Pa4?! (Beter was dameruil) 14...Dxf2+ 15.Kxf2 d5 16.e5
Pd7 17.g3?? (Verliest geforceerd een pion. Normaal was 17.f4) Lf5 18.Tac1

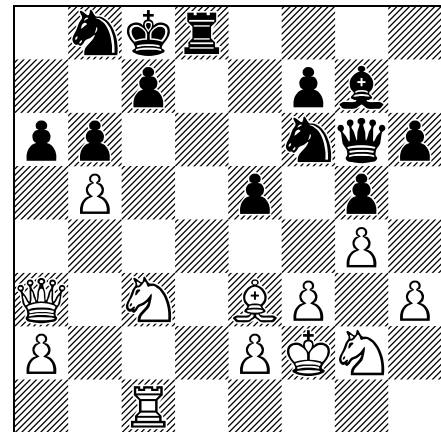


18...b5 19.Pc3 Lc5+ 20.Kg2 Pxe5 21.g4 Lg6
22.Kg3 h5 23.Lf4 f6 24.Lxe5 fxe5 25.Ld3
Lf7 26.g5 g6 27.Te2 Ld6 28.Kg2 Kg7
29.Tce1 Te7 30.Pd1 Tf8 31.Pf2 Le8 32.b3
Tef7 33.c4 Txf3 34.cxd5 cxd5 35.Lb1 Lc6
36.Td1 T3f4 37.Le4 Lc5 38.Pd3 dxe4 0-1

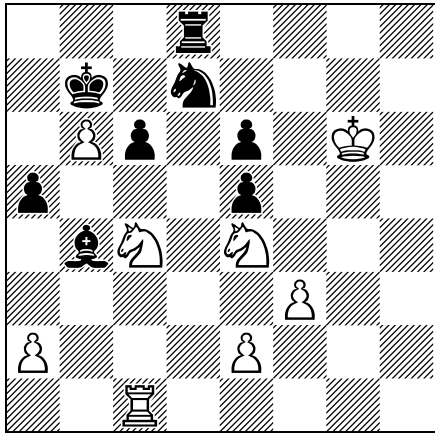


Lasker-Euwe, Mährisch-Ostrau 1923

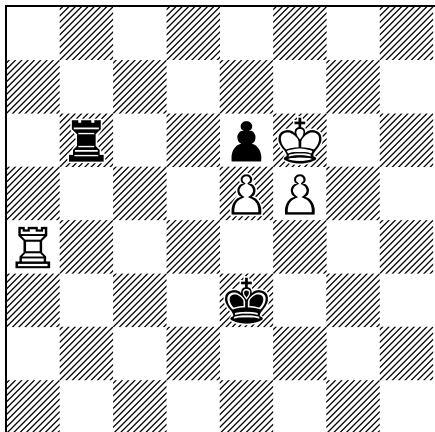
1.d4 Pf6 2.Pf3 g6 3.Lf4 Lg7 4.Dc1 h6 5.h3
b6 6.Pc3 Lb7 7.Dd2 a6 8.Td1 e6 9.Dc1 d6
10.g3 Pbd7 11.Lg2 De7 12.Ph4 Lxg2
13.Pxg2 e5 14.dxe5 dxe5 15.Le3 De6 16.f3
0-0-0 17.Kf2 g5 18.b4 Pb8 19.Da3 Txd1
20.Pxd1 Df5 21.Pc3 Td8 22.g4 Dxc2?
23.Tc1 Dg6 24.b5



24...a5? (Hier was 24...Kb7 beter) 25.Lxb6
Pxc4+ 26.hxc4 Dxb6+ 27.Kf1 h5? 28.Db3!
De6 29.Dxe6+ fxe6 30.gxh5 Th8 31.Kf2
Txh5 32.Pe4 Lf8 33.Kg3 Th8 34.Pe3 Lb4
35.Pc4 Td8 36.Kg4 Kb7 37.Kxg5 c6 38.b6
Pd7 39.Kg6

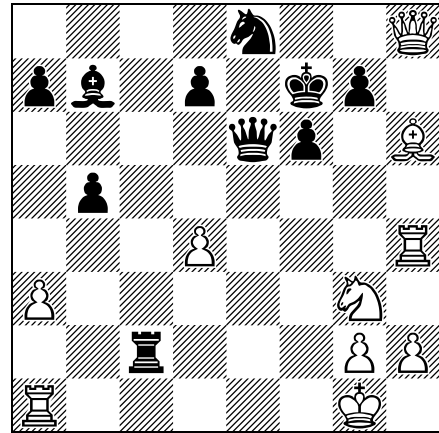


39...Pxb6 40.Pxe5 Pd5 41.Pxc6 Pf4+ 42.Kg5 Tf8 43.Pxb4 axb4 44.Tc2 Tf5+ 45.Kg4 Kb6 46.Pd6 Tf8 47.Tc8 Tf6 48.Kg5 Pd5 49.Tc2 Tf8 50.Kg6 Pc3 51.Pc4+ Kc5 52.Pe5 Ta8 53.Pd3+ Kb5 54.Pc1 Tf8 55.Kg7 Tf5 56.a3 Ka4 57.axb4 Kxb4 58.Pa2+ Pxa2 59.Txa2 Kc3 60.Ta4 Te5 61.e4 Tb5 62.f4 Kd3 63.Kf6 Ke3 64.e5 Tb6 65.f5 1-0



Geller-Euwe, Zürich 1953

1.d4 Pf6 2.c4 e6 3.Pc3 Lb4 4.e3 c5 5.a3 Lxc3+ 6.bxc3 b6 7.Ld3 Lb7 8.f3 Pc6 9.Pe2 0-0 10.0-0 Pa5 11.e4 Pe8 12.Pg3 cxd4 13.cxd4 Tc8 14.f4 Pxc4 15.f5 f6 16.Tf4 b5 17.Th4 Db6 18.e5 Pxe5 19.fxe6 Pxd3 20.Dxd3 Dxe6 21.Dxh7+ Kf7 22.Lh6 Th8 23.Dxh8 Tc2



24.Tc1? (Latere [computer-]analyses hebben uitgewezen dat wit met 24.d5! kon winnen. De hoofdvariant is dan 24...Db6+ [24...Dxd5? 25.Te4!] 25.Kh1 Df2 26.Tg1 Lxd5 27.Te4! Lxe4 28.Pxe4 Dh4 29.Pd6+ Pxd6 30.Dxg7+ Ke6 31.Dg8+ Ke5 32.Td1! [Euwe's analyse ging verder met 32.Le3] 32...De4 33.Le3!! Tc3 [33...Dxe3 34.Dd5+ Kf4 35.g3+ Kg4 36.Td4+ 1-0] 34.Lf2 en wit wint. Uitvoering varianten zijn te vinden in deel twee van Kasparov's serie "My great predecessors") 24...Txxg2+ 25.Kf1 Db3 26.Ke1 Df3 0-1

